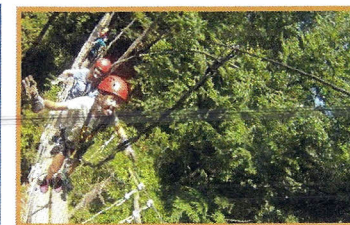
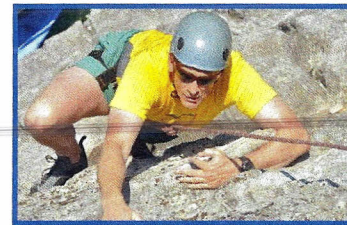
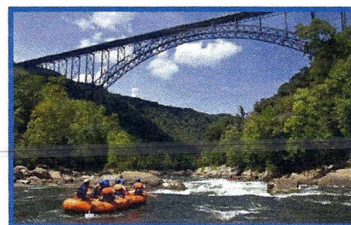


Most Popular Adventures



	Restrictions	Includes	Length	Rating	Trip Start Times ¹	Trip End Time ²	Pre-Tax Rate ³	Guest Rate including tax & fees
Lower New River <i>Thrilling whitewater trip shows you the best of the Gorge. Available in half-day or full-day options.</i>	Torso not to exceed 52"	Gear & Transportation	1 / 2 day Full Day		1:30 pm 9 am-ish	5:30 pm 4:00 pm ish	\$69 \$89	\$76.14 \$100.34
Gravity Zip Lines <i>6 high-speed zips on a course over a mile long. Trips leave every hour on the hour. Only 10 people per trip time permitted.</i>	Must weigh between 100-260 lbs.	Gear & Transportation	1 / 2 day		8:30 am 5:30 pm (leaves every 1.5 hours)	11:30 am 8:30 pm	\$89	\$97.34
TreeTops Canopy Tour <i>Fly on 10 zip lines and cross 5 skybridges as you make your way through our ancient forest. Trips leave every 20 minutes. Only 8 people per trip time.</i>	Must weigh between 90-260 lbs.	Gear & Transportation	1 / 2 day		8:00 am 5:00 pm (leaves every 30 minutes)	11:00 am 8:00 pm	\$69	\$76.14
TimberTrek Adventure Course <i>Swing, fly, climb and cross as you tackle suspended bridges, zip lines and ladders.</i>	no more than 260 pounds	Gear & Transportation	3 hour	 	9:00 am 5:00 pm (leaves hourly)	11:00 am 8:00 pm	\$29	\$33.74
Evening Paintball <i>A real-life gaming challenge with 2 courses pits you against your friends. Must walk to site 1 / 2 mile away. Min. group size: 4 ppl.</i>	bring a change of clothes	Gear	2 hour		5:05 pm	7:05 pm	\$49	\$54.95

Choose the Right Trip


Easiest

Very Low Activity


Easy

Low Activity


Exciting

Moderate Activity


Exhilarating

Strenuous Activity


Extreme

Prolonged Intensity

Reservation Details

RESERVATIONS

- Advanced reservations are required.
- We realize that you do not meet with your guests until a few days prior to your trip with us and are able to adjust numbers accordingly. Please call and confirm the # of participants at least 2 days prior to your trip.
- Trips go rain or shine.
- Please do not be late. We sell out of many activities daily and may not be able to move you to a different time if you are late.
- Transportation is provided for all activities EXCEPT for paintball.

PAYMENTS

- Payment must be received at check-in and prior to any activity.

COMP TRIPS

- We offer comp trips to Adventure Leaders on all activities listed with at least 5 guests participating on the same activity. Leaders will also receive free camping, but must pay for lodging upgrades and meals.

Call today!
888.406.0922

Directions

Directions:

Please be careful using GPS once you get to US-19. You will want to follow our directions below.

From the East to Adventures on the Gorge:

- From I-64 West (or I-81 South)
- Take I-64W to I-77 North
- Follow I-77N to Beckley, WV
- Take the North Beckley Exit (# 48) onto U.S. Rt.19 North
- Follow Rt.19N approximately 20 miles until you cross the New River Gorge Bridge (near Fayetteville)
- Turn left onto Ames Heights Road (the second road on the left past the Bridge)

From the South to Adventures on the Gorge:

- From I-77N, take the North Beckley Exit (# 48) onto U.S. Rt.19 North
- Follow Rt.19N approximately 20 miles until you cross the New River Gorge Bridge (near Fayetteville)
- Turn left onto Ames Heights Road (the second road on the left past the Bridge).

From US-19:

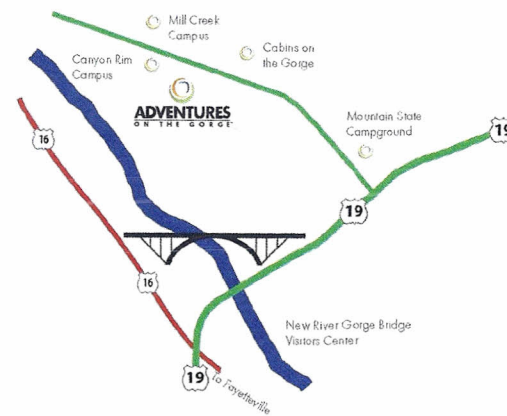
We are located between mile marker 20.5 and 21 on US-19, just north of the New River Gorge Bridge on Ames Hts. Rd.

Once you are Ames Hts. Rd., follow the road 8/1C mile to the Lodging Check-In on the left.

Upon Arrival:

Please stop at the check-in on the left to take care of payment and get your welcome kit.

219 Chestnutburg Rd., Lansing, WV 25862



Lodging



Family Camping

If you're into roughing it, our wooded campground is the ideal place to pitch your tent. Our campsites are primitive and do not include electricity or water.

	Unit Minimum	Unit Capacity	A/C	Heat	Electric	Kitchenette	Bathroom	Pre-Tax Rate ³	Guest Rate including tax & fees
	n/a	sites vary	N	N	N	N	N	\$8.00 pp	\$8.80 pp
	6	8	N	N	N	N	N	\$10.00 pp	\$11.60 pp
	6	8	N	N	Y	N	N	\$12.00 pp	\$13.92 pp



Platform Tents

These canvas tents contain 4 sets of single bunk beds and come equipped with a fire ring and picnic table.



Hemlock Bunkhouses

Our roomy 16 x 20 ft. rustic cabins have 2 layouts, 11 with 4 sets of single bunks and 11 with 2 sets of single bunks and 2 full beds.

Amenities

- Canyon Falls Swimming Pool
- Flying Squirrel 9-Hole Disc Golf Course
- On-site coin laundry
- 3 on-site bath and shower facilities
- Mill Creek Hiking Trail - on-site
- Wild Rock Bike Trails - on-site
- New River Gorge overlooks
- Game room
- Sand volleyball court
- Cornhole, horseshoe and other yard games
- Campfire circles
- WiFi in most places
- 4 on-site restaurants
- 3 on-site bars
- Free evening entertainment including movies, hikes, live music and more.
- 2 on-site stores ranging from camp goods to souvenirs and more.